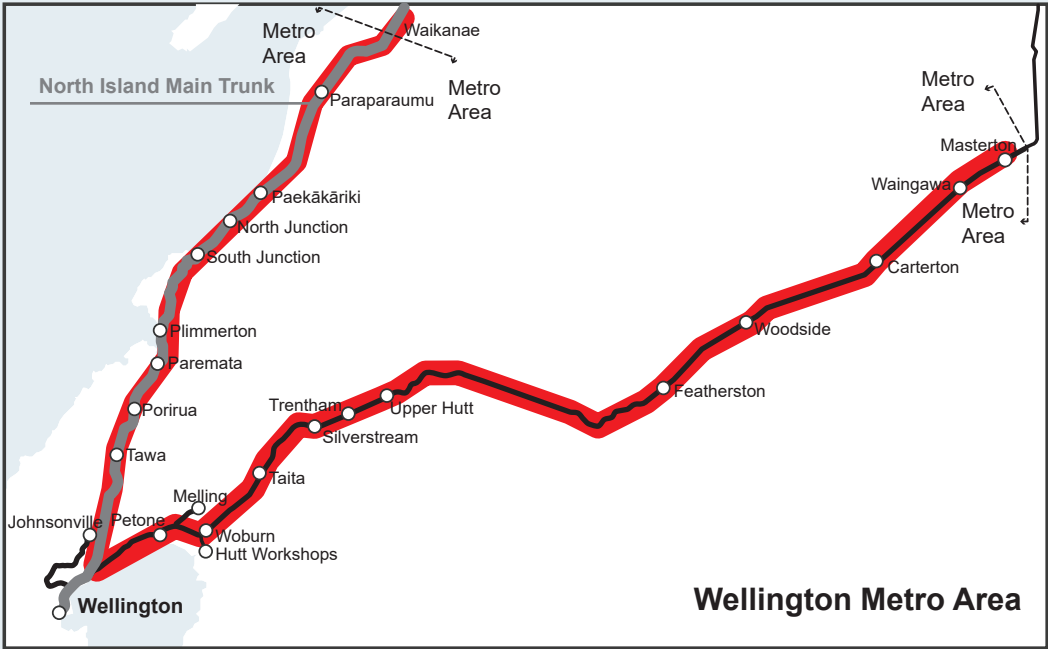
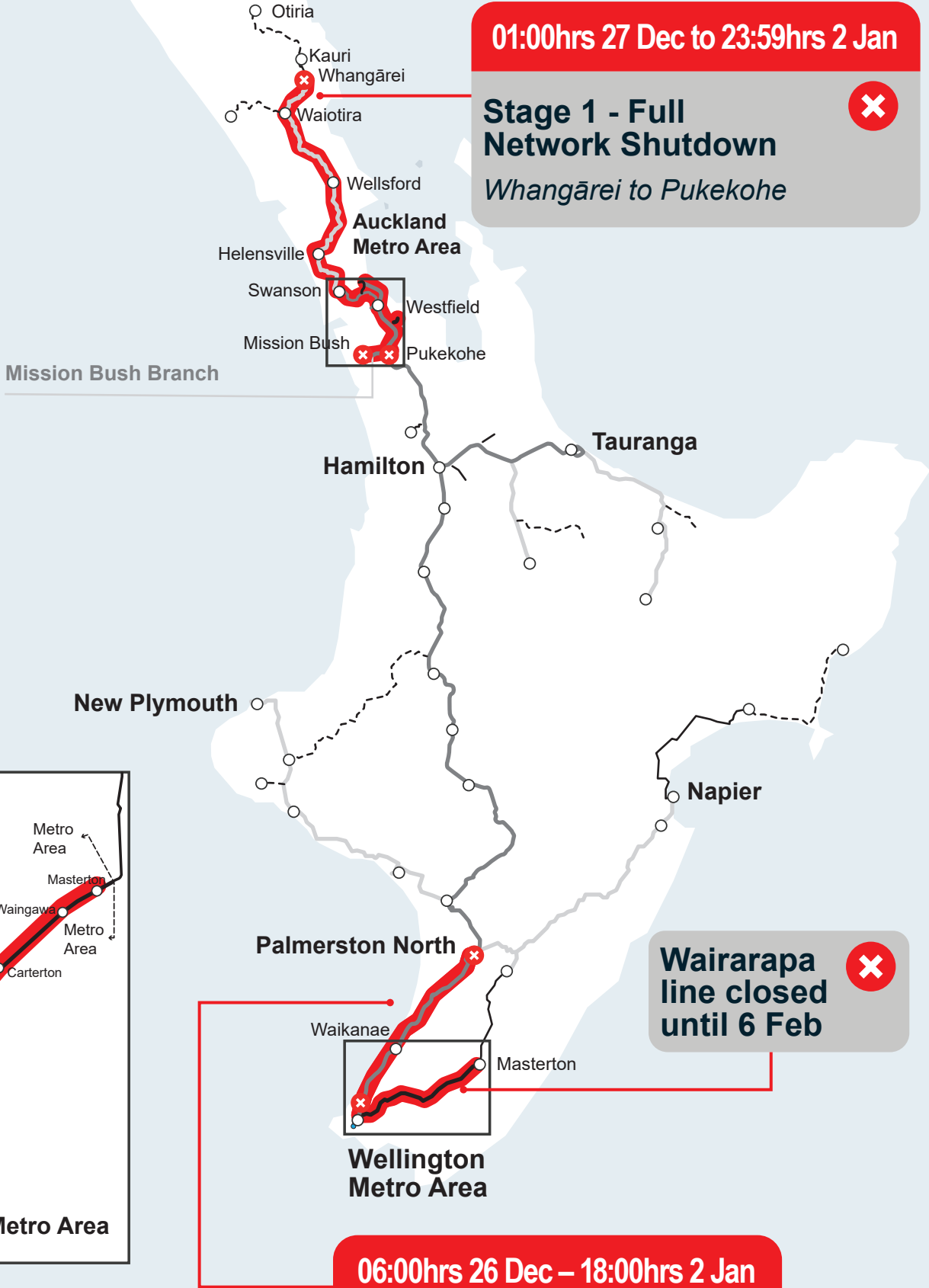




Christmas Block of Lines 2024/25

Auckland block of line extended for CRL Readiness

5 stages of work - Stage 1



Stage 1 - Full Network Shutdown
Whangārei to Pukekohe
01:00hrs 27 Dec to 23:59hrs 2 Jan

Plimmerton tunnel works
(Impacts on Wellington to Palmerston North freight)
06:00hrs 26 Dec – 18:00hrs 2 Jan (All freight services cancelled)

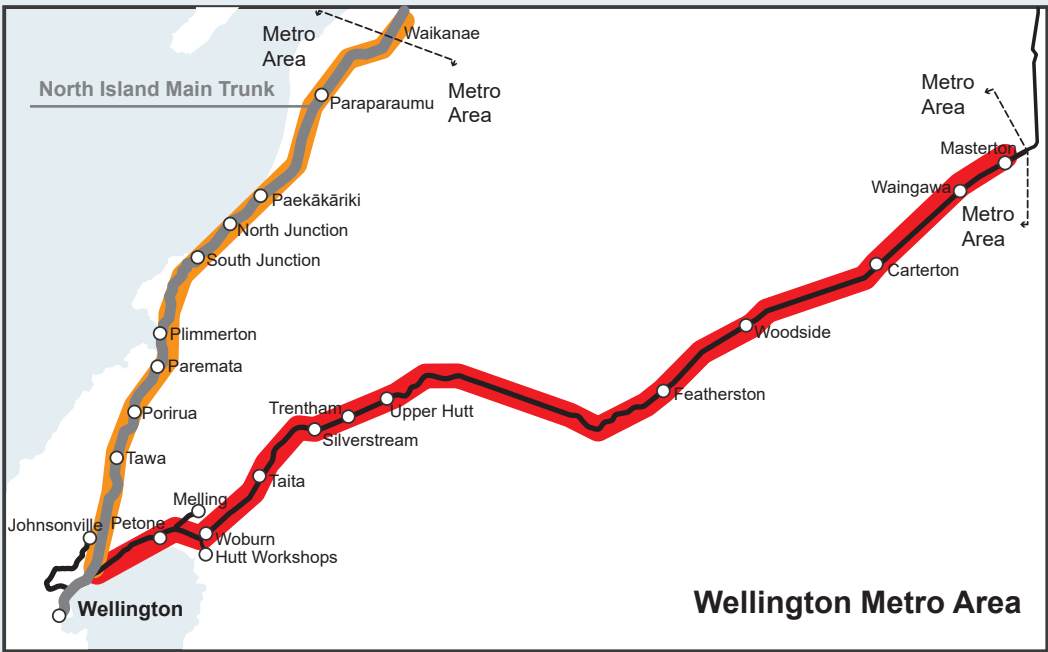
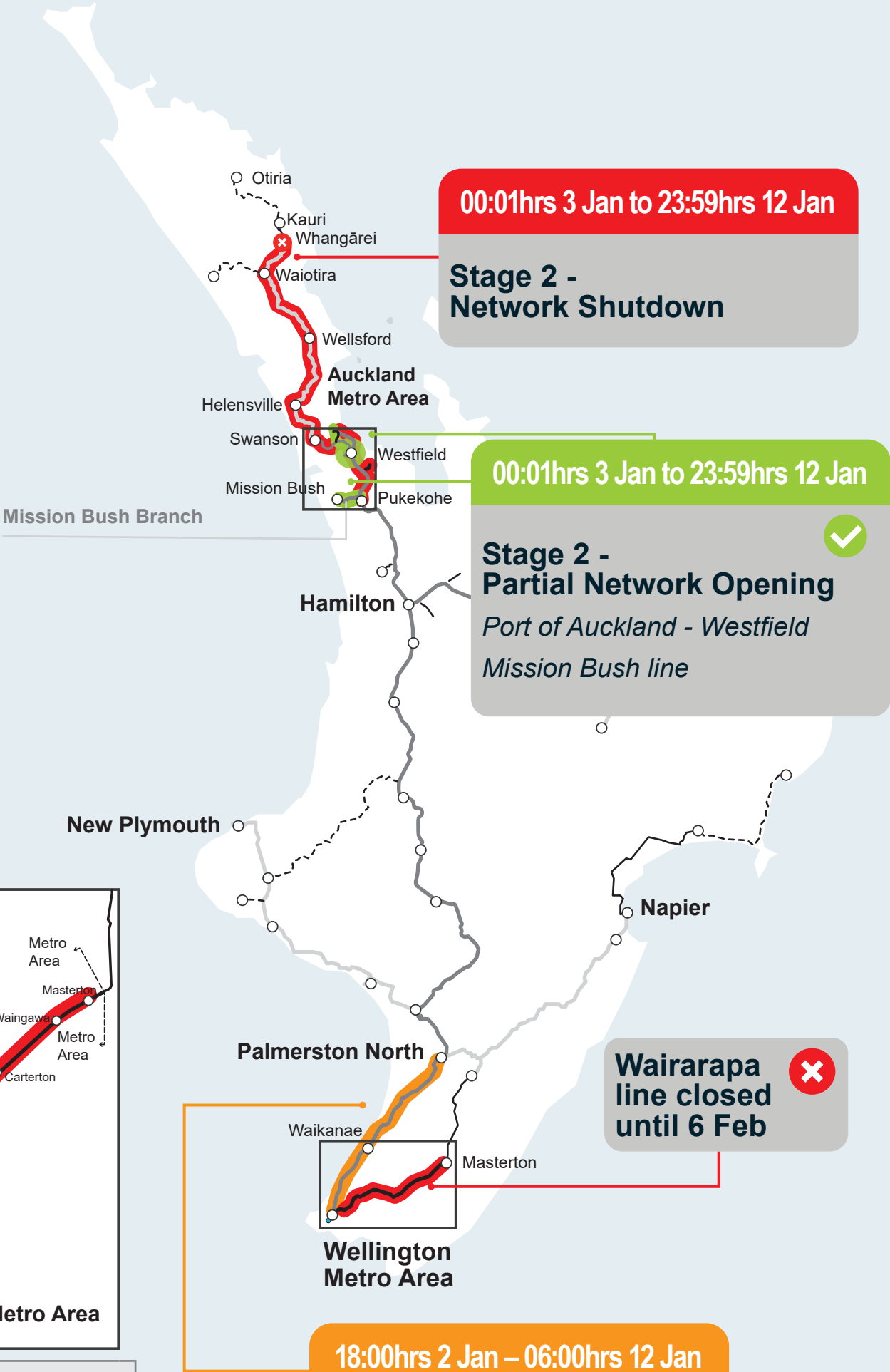
Plimmerton tunnel works
Impacts on Wellington to Palmerston North freight
Wellington to Palmerston North



Christmas Block of Lines 2024/25

Auckland block of line extended for CRL Readiness

5 stages of work - Stage 2



Our Projects



Stage 2 - Network Shutdown
Whangārei to Pukekohe
00:01hrs 3 Jan to 23:59hrs 12 Jan



Stage 2 - Partial Network Opening
Wellington to Palmerston North (Freight will move at night only)
00:01hrs 3 Jan to 23:59hrs 12 Jan



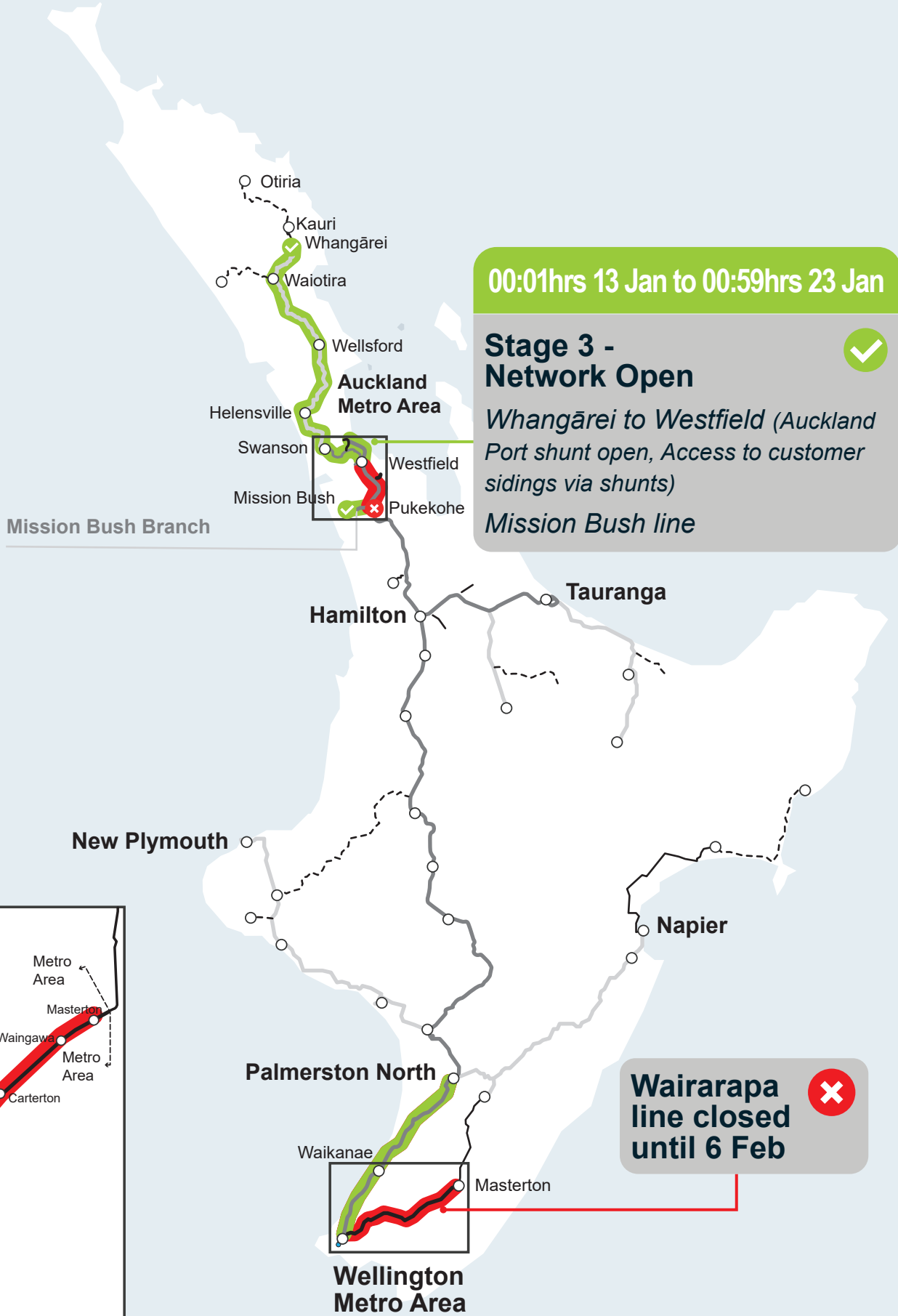
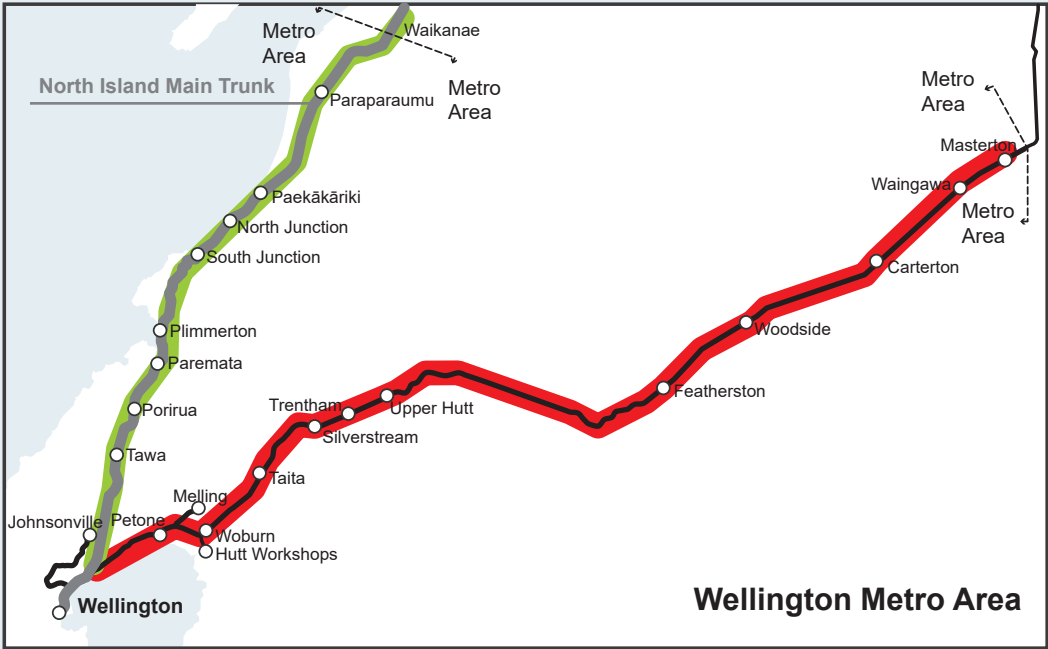
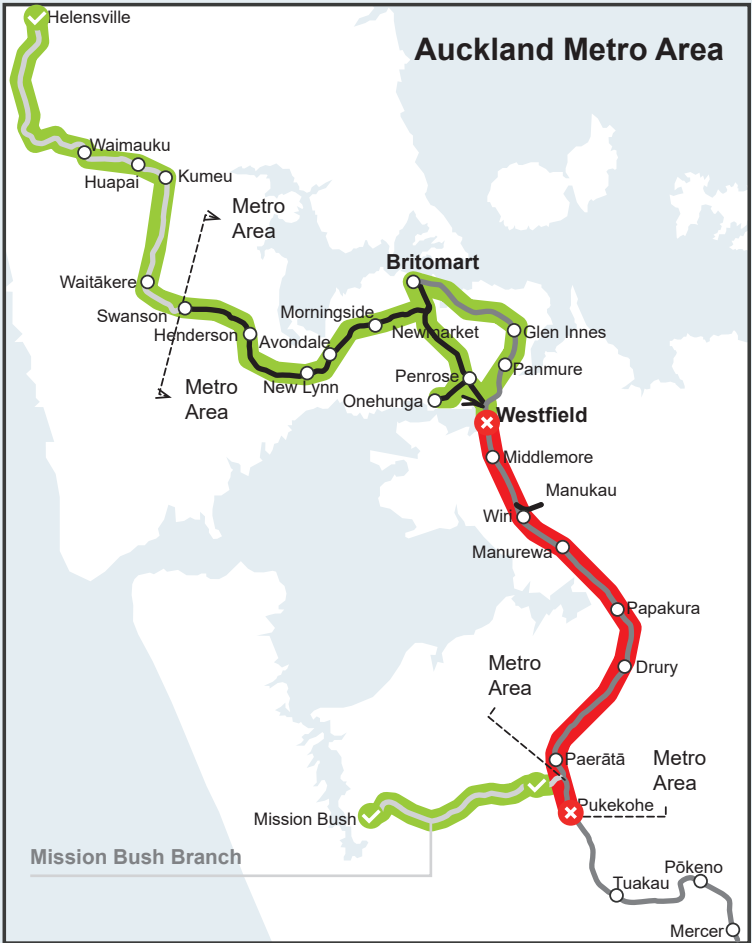
Stage 2 - Partial Network Opening
Port of Auckland - Westfield & Mission Bush line
00:01hrs 3 Jan to 23:59hrs 12 Jan



Christmas Block of Lines 2024/25

Auckland block of line extended for CRL Readiness

5 stages of work - Stage 3



00:01hrs 13 Jan to 00:59hrs 23 Jan

Stage 3 - Network Open ✓

Whangārei to Westfield (Auckland Port shunt open, Access to customer sidings via shunts)

Mission Bush line

Wairarapa line closed until 6 Feb ✗

Our Projects



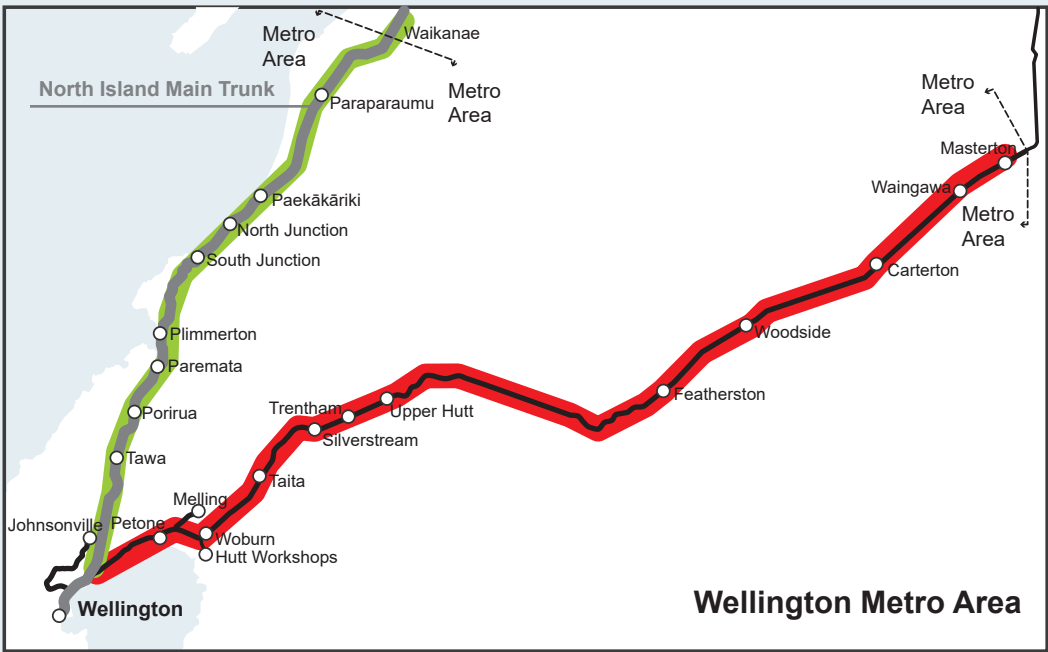
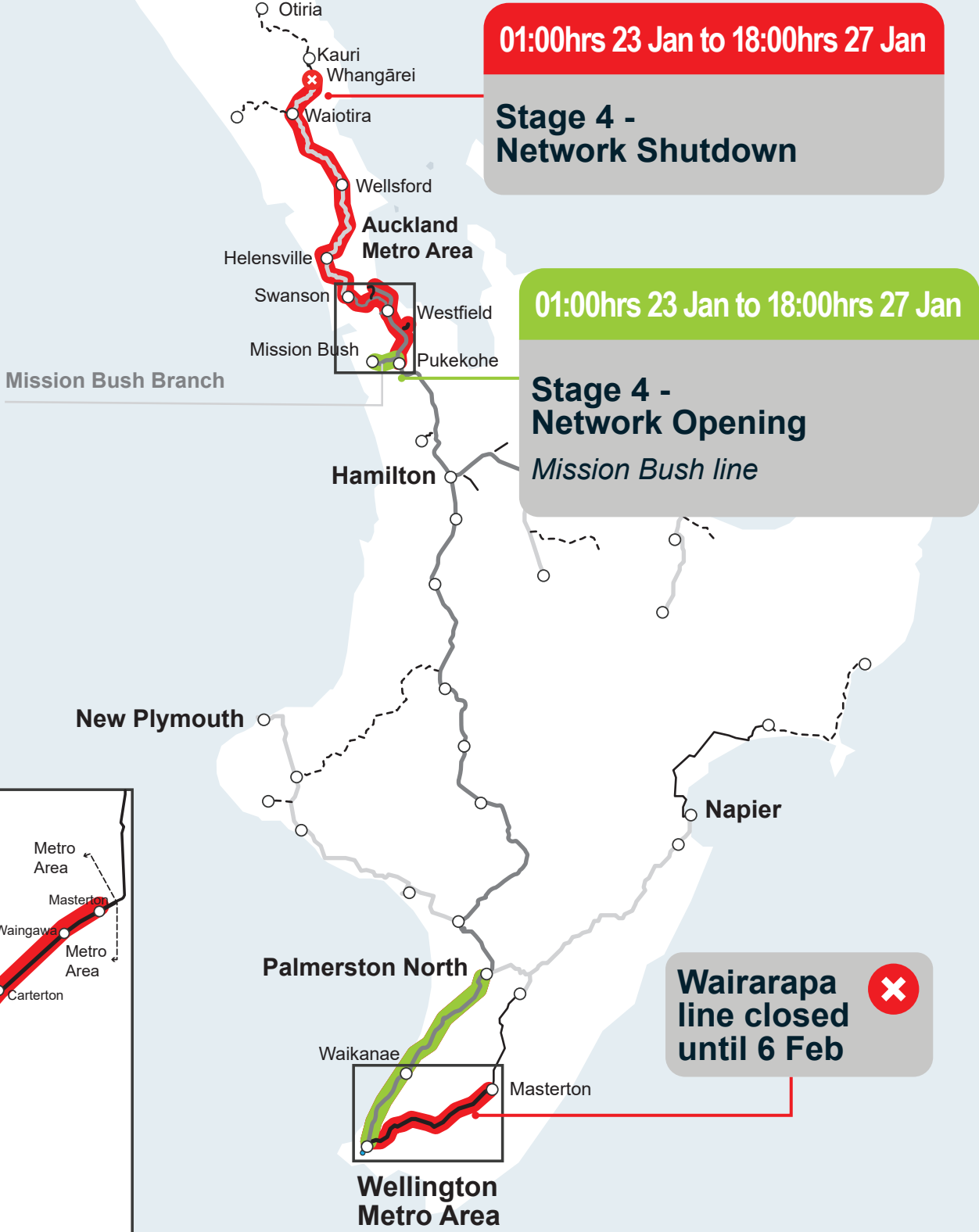
Stage 3 - Network Open
Whangārei to Westfield (Auckland Port shunt open, Access to customer sidings via shunts)
00:01hrs 13 Jan to 00:59hrs 23 Jan





Christmas Block of Lines 2024/25

Auckland block of line extended for CRL Readiness

5 stages of work - Stage 4



Our Projects

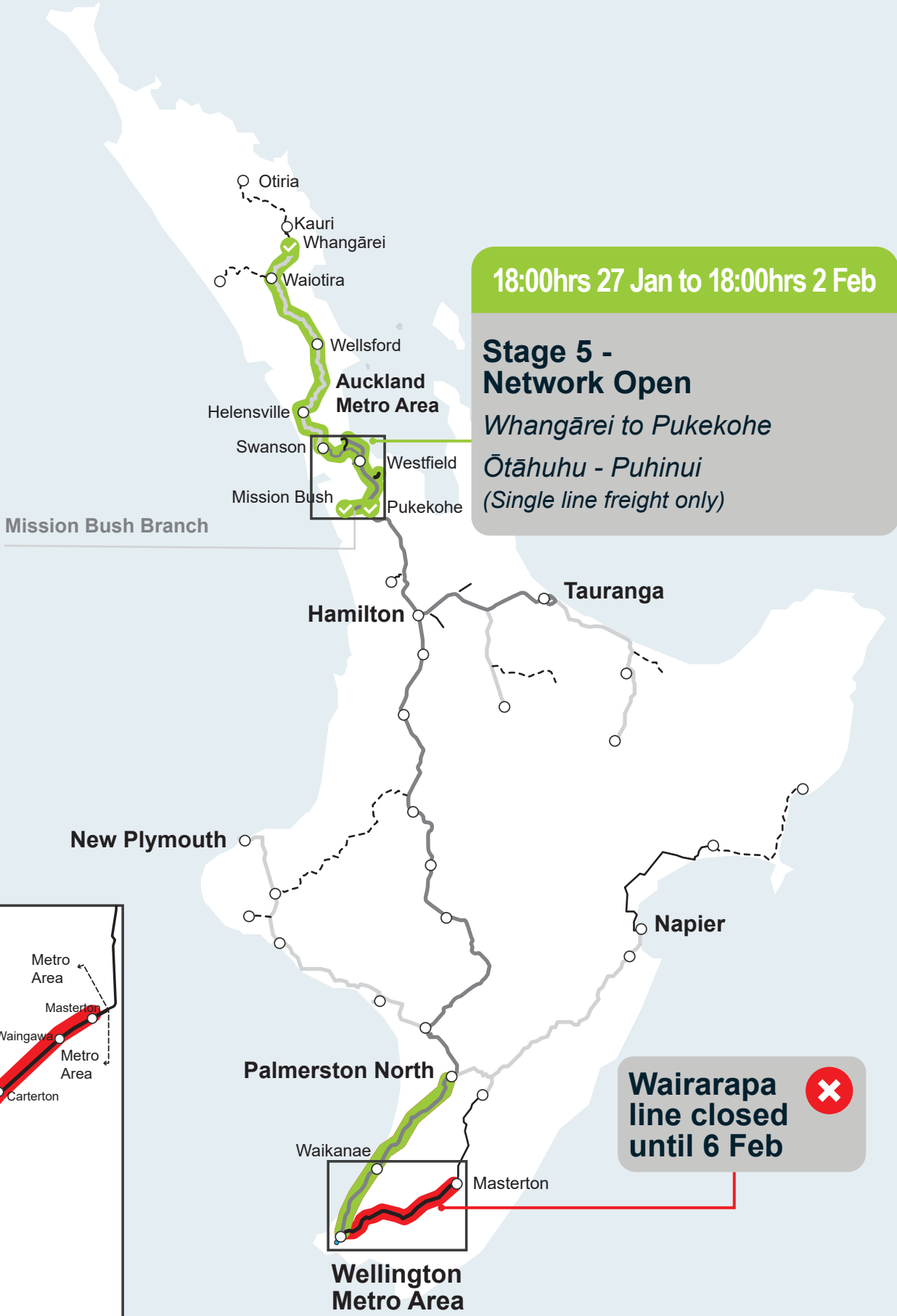
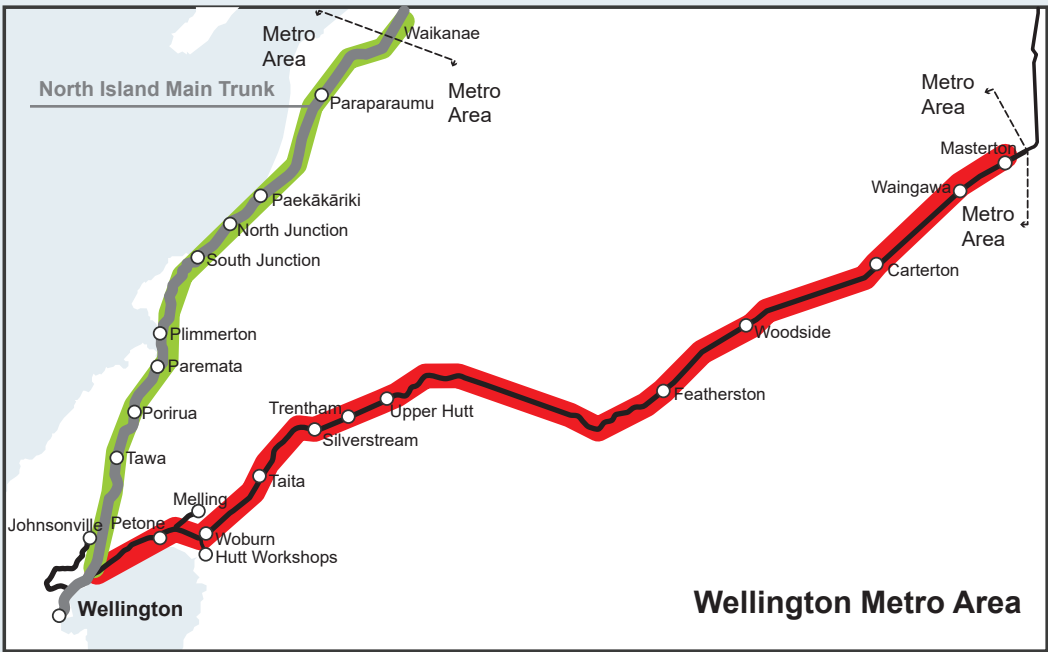
-  **Stage 4 - Network Shutdown**
Whangārei to Pukekohe
01:00hrs 23 Jan to 18:00hrs 27 Jan
-  **Stage 4 - Network Opening**
Mission Bush line
01:00hrs 23 Jan to 18:00hrs 27 Jan



Christmas Block of Lines 2024/25

Auckland block of line extended for CRL Readiness

5 stages of work - Stage 5



Our Projects

Stage 5 - Network Open
Whangārei to Pukekohe
Ōtāhuhu - Puhinui (Single line freight only)
18:00hrs 27 Jan to 18:00hrs 2 Feb