

Sidings. Increasing freight efficiency.

KiwiRail is investing in New Zealand's future. The demand for rail is growing and we're continuing to invest in multimodal solutions, rail and ferries, and innovative technologies. Through rail, we're supporting the economy and the environment for the health and wellbeing of future generations.

Moving your Goods. Efficiently and Sustainably.

Sidings are an efficient solution for many large exporters, manufacturers, and freight forwarders.

A dedicated siding increases business efficiency and control by connecting export manufacturing or warehousing directly to New Zealand's ports.

Whether you're a freight forwarder or distribute your own products nationwide, a siding gives you direct access to our nationwide rail network.

Wagons are shunted right to your site and you can load your freight directly on. This saves multiple lift costs and time. We collect them on an agreed schedule that works with your business and makes sense with the broader rail freight schedule. Your wagons are connected to a larger train for transport around the country. Costs are determined on the frequency of pick up, volume and location.

Used for light or heavy freight, our multimodal assets are designed to be moved by truck or rail. This offers flexibility and reduced handling, giving you a cost-effective way to meet the demands of your customers.

Kaitiakitanga. Caring for our land.

Sustainability is central to our purpose of creating stronger connections for a better New Zealand. We're committed to helping New Zealand reach their net zero carbon emissions goal by 2050.

Increasing rail use not only benefits business, but it's also good for all New Zealanders. Rail is sustainable. Every tonne of freight carried by rail having 66% fewer carbon emissions than heavy road freight. Rail also takes cars and trucks off our roads, reducing congestion, improving road safety, and reducing road costs and the reliance on fuel.

By its very nature, rail is helping businesses hit their sustainability targets and New Zealand to meet its commitment to carbon reduction.

Rail. On your side.

There's a lot to consider when making an investment in rail sidings. Our expert teams will guide you through decisions around size, tracks, design and efficiency, and details unique to your business and freight.

Where we place the siding and whether you want it connecting to a covered or uncovered loading space all depends on what works best for you. We can design to your needs.

Case Study: Toll Auckland

Toll recently opened a new multimodal freight hub in the Otahuhu industrial area. Having outgrown their existing site, this purpose-built hub strategically connects them to the nationwide rail network.

The two internal and two external sidings allow Toll to efficiently connect all types of freight to rail and smoothly move freight between different transport modes.

Jon Adams, Executive General Manager Toll New Zealand says, “The new Auckland Freight terminal is a highly strategic site with linkages to all major arterial routes. Toll can now berth trains at dock level, inside the terminal. Road and rail will be served under cover and the new facility will increase safety and productivity across the board.”

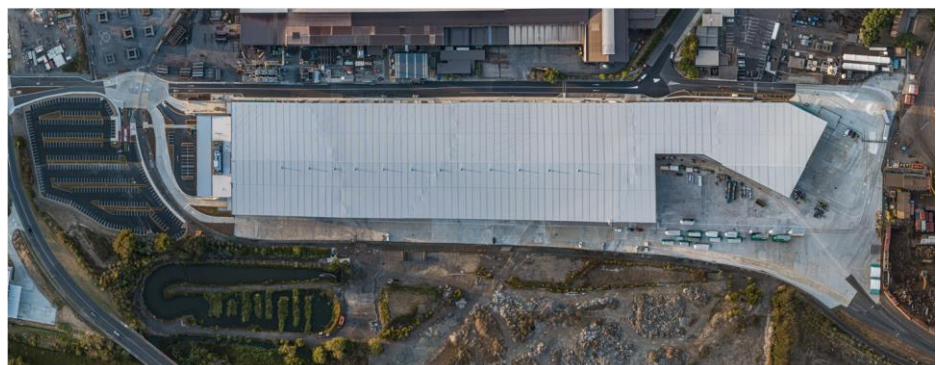


Photo: Toll Tamaki, Otahuhu, Auckland

Case Study: Synlait Dunsandel

Officially opened in 2021, the new 30-wagon siding was a vision 10 years in the making.

When Synlait purchased and designed their milk nutrition facility in Canterbury, being alongside the rail corridor was a key consideration. The intent was always to connect a siding, knowing it would benefit people, plant, and profit. Growth in export volumes and the building of onsite warehousing storage meant 2021 was the ideal time to take the next step and connect a siding.

Around 1,300 containers of goods are now transported by rail between Dunsandel and Lyttelton each month. This significantly reduces Synlait's environmental footprint by removing approximately 16,000 truck movements annually.

The new rail siding at Synlait Dunsandel extends their manufacturing facility from farm-to-port. The rail siding simplifies their supply chain network, providing greater control and traceability of product and improves customer responsiveness. It also provides environmental and health and safety benefits for the Synlait team and the wider community.

Moving to greener pastures

KiwiRail is the second largest landholder in New Zealand. Whether you're looking for a green site or an existing, unused siding, we may have some options for you.

View our [property portfolio](#) to see what is currently available or [talk to your local freight sales manager](#).